

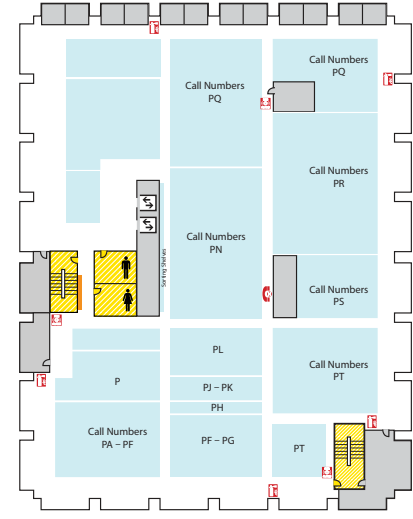
Main Library FLOOR PLAN GUIDE

NOTE: Locations may have changed due to ongoing space renovations. Please visit a service desk for additional assistance.

4

4-WEST

- Call Numbers M, N & TR (Fine Arts Library)
- Collaborative Tech Labs (A/V Labs W426H & G; Smartboard Labs W426D & F)
- Conference Rooms A and B
- Digital and Multimedia Center (Kline DMC)
- Fine Arts Library (Music and Art)
- Gaming Rooms
- Green Room
- Vincent Voice Library

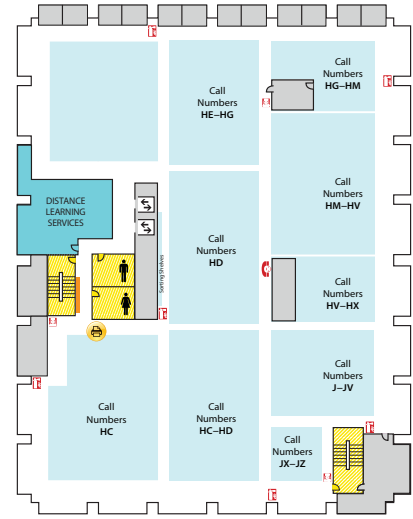
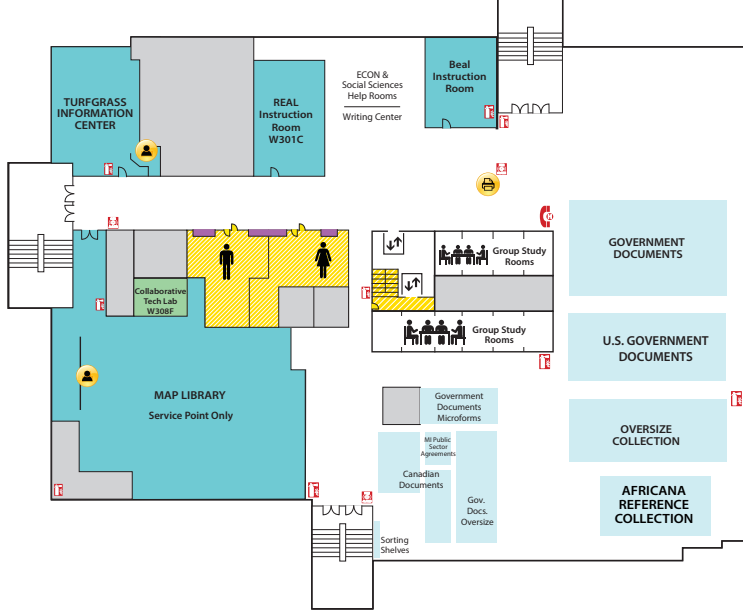


- 4-EAST**
- Call Number P

3

3-WEST

- Map Library Service Point
- Collaborative Tech Lab (Presentation Lab W308F)
- Government Documents (U.S. and Oversize)
- 3-West Instruction Room (REAL)
- Africana Reference Collection
- Beal Instruction Room
- Map Library
- Turfgrass Information Center
- Oversize Collection
- ECON and Social Sciences Help Room
- Writing Center

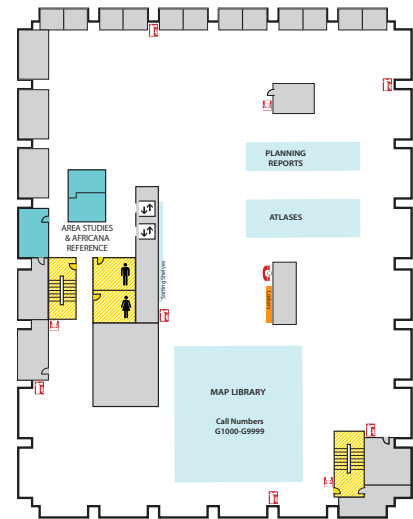
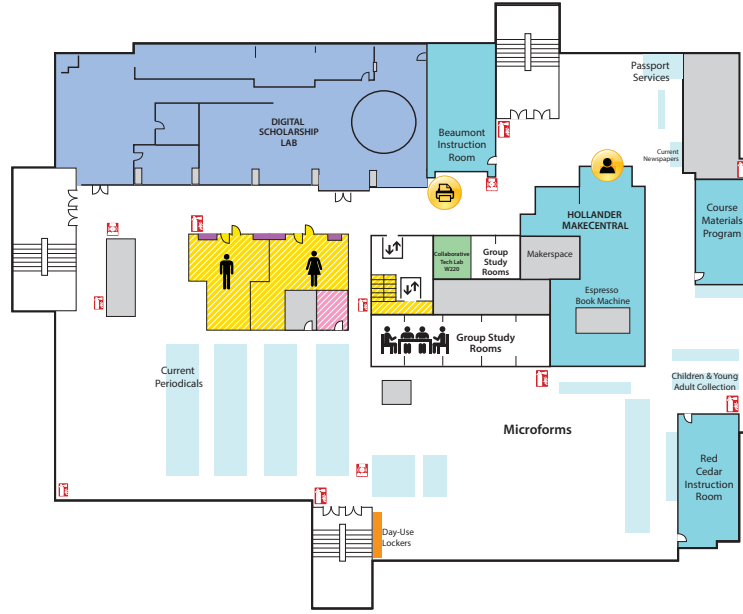


- 3-EAST**
- Call Numbers HC-J
 - Distance Learning Services

2

2-WEST

- Group Study Rooms
- Children's and Young Adult Literature Collection
- Collaborative Tech Lab (Mediascape Lab W220)
- Hollander MakeCentral (Copy Center)
- Course Materials Program
- Current Periodicals
- Beaumont Instruction Room
- Digital Scholarship Lab
- Passport Services
- Red Cedar West Instruction Room
- MakeCentral (Hollander)
- Microforms
- Nursing Mothers' Room
- Passport Services
- Writing Center

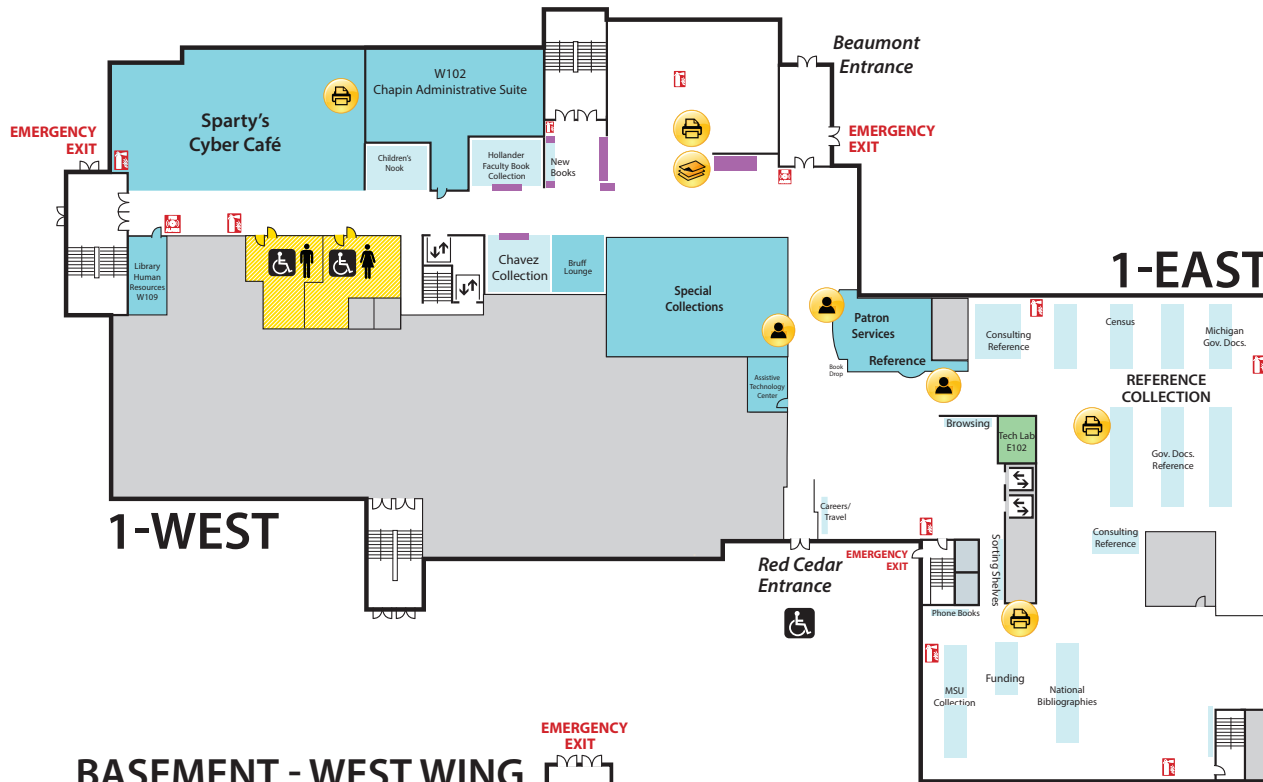


- 2-EAST**
- Maps Library
 - Call Numbers G1000-9999
 - Area Studies
 - Planning Reports

1

First Floor WEST

- Chavez Collection
- Children's Nook
- CyberCafe
- Development Office
- Faculty Book Collection (Hollander)
- Human Resources
- New Books
- Special Collections
- Student Employment (Library; Human Resources)



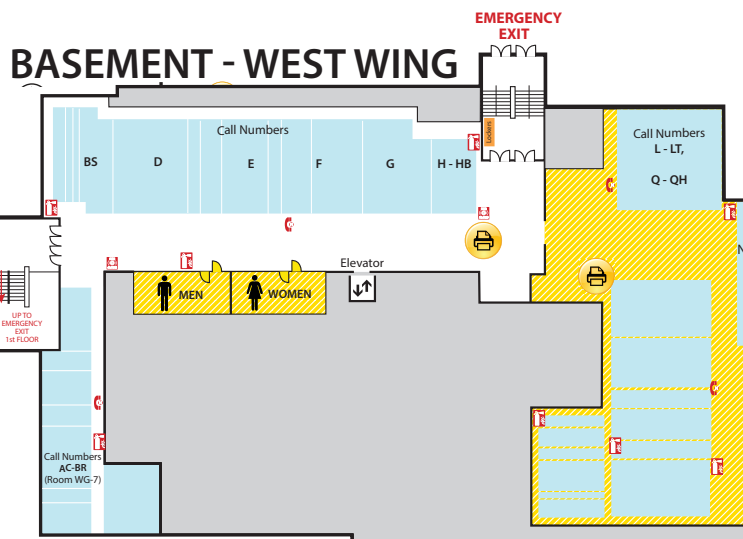
- First Floor CENTER**
- Assitive Technology Center
 - Patron Services
 - Reserves
 - Reference Desk (Ask a Librarian)

- First Floor EAST**
- Browsing Collection
 - Careers Collection
 - Collaborative Tech Lab (E102)
 - Funding Center
 - Government Documents (Census, Michigan)
 - Reference Collection
 - Travel Guides

B

BASEMENT WEST

- Call Numbers A-HB



BASEMENT - EAST WING

- BASEMENT CENTER**
- Call Numbers L & Q-RB

- BASEMENT EAST**
- Call Numbers RC-Z (Except TR)



North

Locations may have changed due to ongoing space renovations. Please visit a service desk for additional assistance.